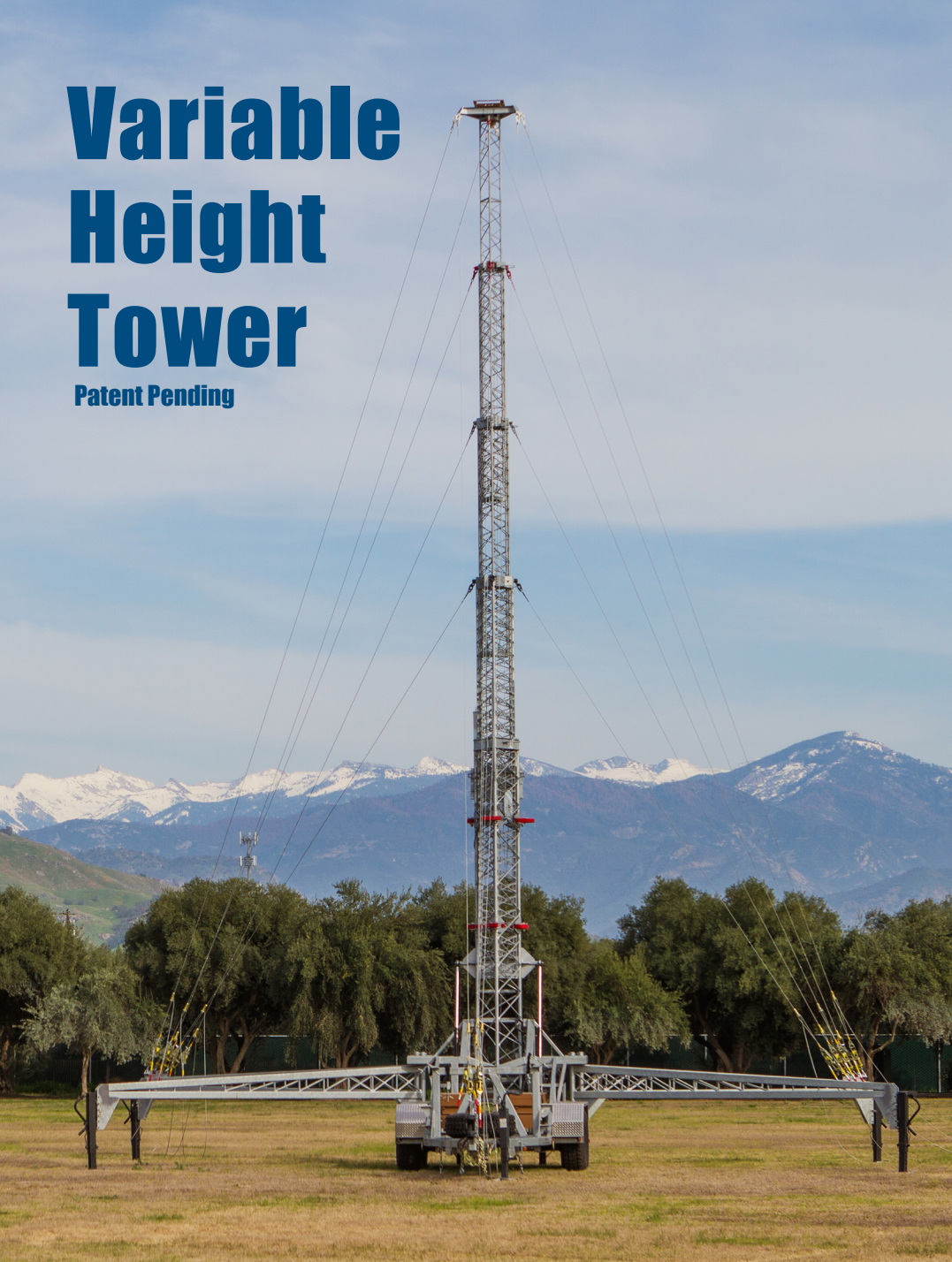


Variable Height Tower

Patent Pending



MOBILE SURVEILLANCE SOLUTIONS

Variable Height Tower

The Variable Height Tower optimizes the platform elevation to maximize system effectiveness while minimizing deployment time and situational risk.

**Variable Heights
up to 80 FT**

•

Rapid Deployment

•

Self-Supporting

•

Guy to Outriggers

•

ISO 9001:2008

US TOWER CORP.

California, Kansas,
Alabama

www.ustower.com

559-564-6000



Variable Height Tower

The Variable Height Tower expands on the functionality of US Tower's highly successful RMTU480 Mobile Tower System by allowing safe deployment at varying heights. Depending on operational, environmental or tactical considerations, the tower is able to be elevated to a height that optimizes the mission objectives while minimizing risk of detection. Once at the optimal height, the tower is locked into place with a single lever actuation and guyed to its outriggers utilizing US Tower's patented Rapid Deploy Guy Kit. An advanced on-board computer guides the operator through safe lockout of the tower.

Features:

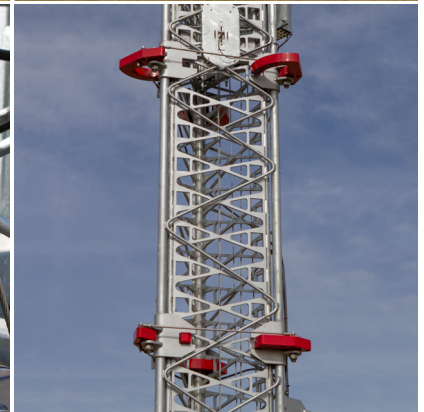
- Variable Deployment Height
- Rapid Deployment, Minimal Setup
- No Earth Penetrations Required
- Guyed to Outriggers / Trailer

Options:

- US Tower's patented Rapid Deploy Guy Kit
- 28 VDC System
- Cold Weather Package
- AC or DC Generator
- Tension Indicator Assembly

Environmental Standards:

- LOW TEMPERATURE : (-10°C operational) and (-15°C Storage) per Mil-Std-810F Method 502.4 procedure I and I
- HIGH TEMPERATURE : (+49°C operational) per Mil-Std-810F Method 505.4 Procedure I, Climate A1
- SOLAR RADIATION : (Three 24-hour cycles with 1120W/m2 solar loading) Per Mil-Std-810F Method Diurnal Cycle
- HUMIDITY : (Ten 24-hour cycles @ 95% RH between +30°C and +60°C per Mil-Std-810F Method 507.4
- BLOWING RAIN : Rainfall rate 4 inches/Hr, (4) sides, 30 minutes per side, 40 MPH wind per Mil-Std-810F Method 506.4
- BLOWING SAND : Per Mil-Std-810F Method 510.4 procedure II
- BLOWING DUST : Per Mil-Std-810F Method 510.4 Procedure I



VARIABLE HEIGHT TOWER SPECIFICATIONS

EXTENDED HEIGHT	40 FT - 80 FT	NUMBER OF AXLES	2
MINIMUM HEIGHT	27 FT	C-130 TRANSPORTABLE	YES
TOWER SECTIONS	5 @ 19 FT EA	ERECTABLE WIND SPEED	40 MPH
MAXIMUM PAYLOAD	650 LBS	MAXIMUM SAIL AREA	16 SQ FT
TRANSPORT HEIGHT	8 FT 4 IN	TIME TO ELEVATE MAST/TOWER	6.5 MINS
TRANSPORT WIDTH	8 FT 6 IN*	TIME TO LOWER MAST/TOWER	6.5 MINS
TRANSPORT LENGTH	30 FT	TIME TO TILT/RAISE MAST/TOWER	2 MINS
TRANSPORTABLE WEIGHT	10,200 LBS	DEPLOYMENT TIME (PERSONS/MINUTES)	2 / 25 MINS
TONGUE WEIGHT	710 LBS	DEPLOYED FOOTPRINT	37 FT x 34 FT
DECK HEIGHT	24 IN	TILT MECHANISM	2 HYDRAULIC RAMS

Notes: 1. Twist, Sway and Deflection may vary depending on the type of payload.

2. Weight excludes any payload or options.

3. All values shown are approximate and subject to change at the sole discretion of the manufacturer without notice.